A light gray silhouette of a drummer playing a drum set, centered in the background. The drummer is shown from the waist up, holding drumsticks and playing a snare drum and a cymbal. The drum set includes a snare drum, a bass drum, and two cymbals on stands.

Drum and Percussion Notation

Katie Wardrobe



Today's session

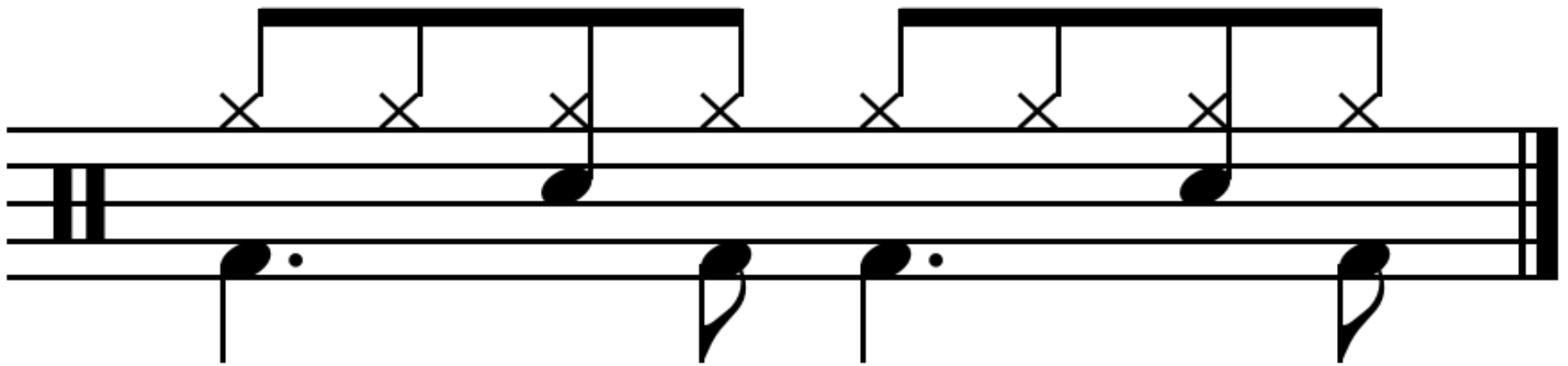
- Notation conventions
- Mechanics in Sibelius



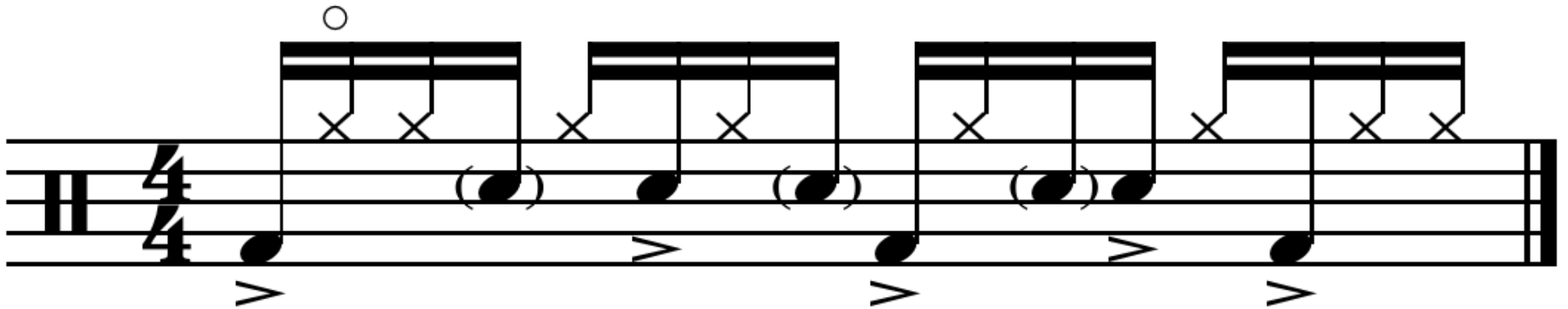
Styles of drum set notation



Notating in Two Voices



Linear Notation



Rhythmic Notation

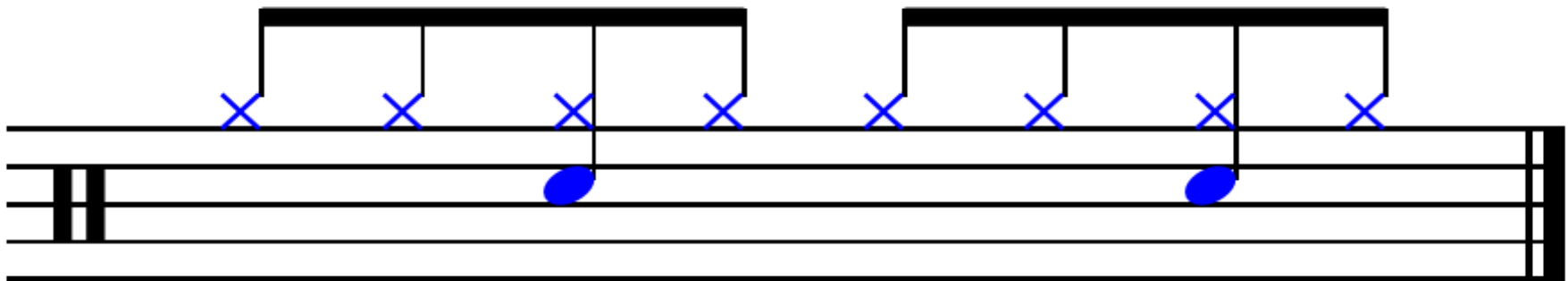


Tips for notating in two voices



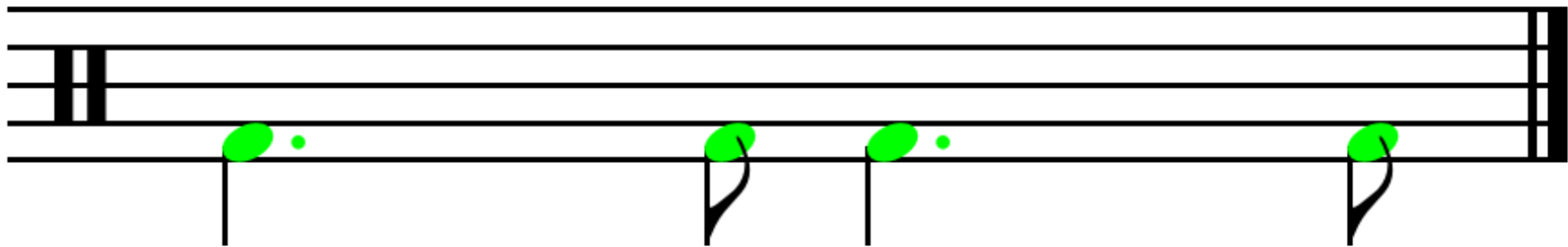
Voice I

For parts of the kit played with the hands



Voice 2

For parts of the kit played with the feet



Exception!!



Top Sibelius Tips



Understand the drum map

The image shows two musical staves illustrating a drum map. The first staff has five notes on lines 1, 2, 3, 4, and 5. The second staff has five notes on lines 1, 2, 3, 4, and 5.

Staff	Line	Instrument
1	1	Pedal Hi-Hat
1	2	Bass drum 1
1	3	Acoustic bass drum
1	4	Low floor tom-tom
1	5	High tom-
2	1	Side stick
2	2	Low-mid tom-tom
2	3	High woodblock
2	4	High-mid tom-tom
2	5	Cowbell

- which instrument
- which line/space
- which notehead



Understand voices

- Decide which drum parts in each voice
- Don't use more than two voices
- Voice 1 ALWAYS stems up
- Voice 2 ALWAYS stems down

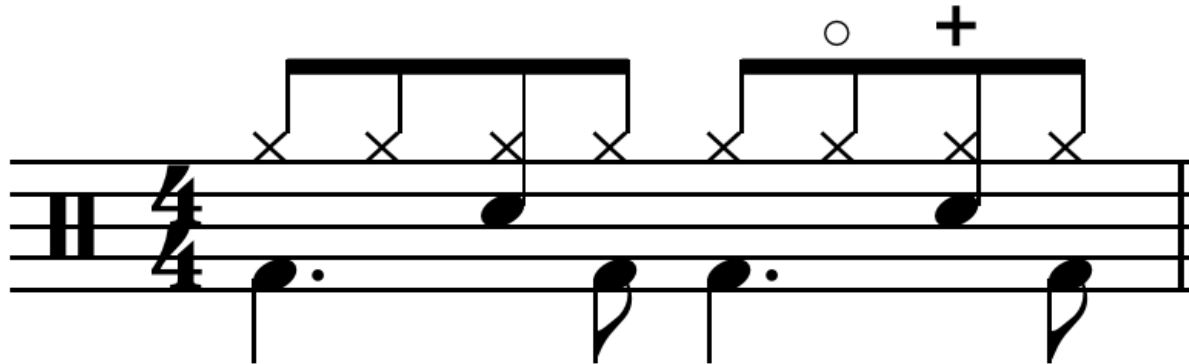


Create three basic
drum patterns



#1 Alphabetic entry

Rock ♩ = 100



- pattern in full once
- students: sight-read, pros: improvise
- repeat bar sign



#2 Step-time entry

Bossa ♩ = 140

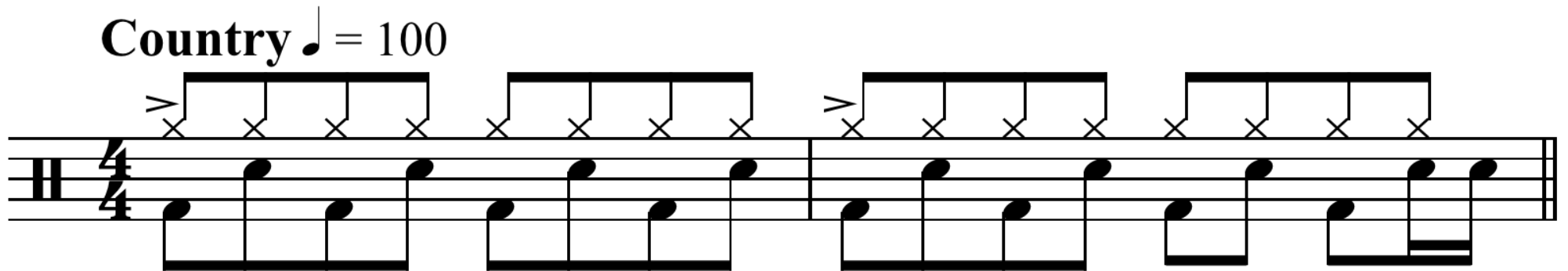
The image shows a musical score for a Bossa nova pattern in 4/4 time. The tempo is marked as ♩ = 140. The notation consists of two staves. The top staff uses slash notation (x) to indicate a rhythmic pattern of eighth notes. The bottom staff shows the corresponding melodic line with quarter notes and dotted quarter notes. The pattern is repeated four times across the staff.

- Bossa pattern
- Slash notation
- Plug-in: number bars



#3 Flexitime entry

Country ♩ = 100



The musical notation is presented on two staves. The top staff is a drum line, and the bottom staff is a bass line. The time signature is 4/4. The tempo is marked as "Country ♩ = 100". The drum line features a consistent pattern of eighth notes on the snare/drum and cymbals, with accents (>) over the first and third measures. The bass line consists of eighth notes and quarter notes, providing a steady accompaniment for the drum pattern.

- Country pattern
- Play in “live”



Ideas Window

- Store your patterns for later use
- Find existing drum patterns



Other Conventions

- Indicating Fills/Solos
- Specifying “as written”
- Cues
- Sticking
- Rolls
- Ghost notes
- Grace notes
- Rhythmic notation



Orchestral Percussion #1

One player - multiple instruments

- Stave for each instrument
- Hide when not playing
- Turn on Multirests
- System breaks for a clean switch



Orchestral Percussion #2

One player - multiple instruments

- Use one stave
- Use Instrument Change feature





email katie@midnightmusic.com.au

web www.midnightmusic.com.au

(free monthly newsletter)

twitter [@katiesw1](https://twitter.com/katiesw1)